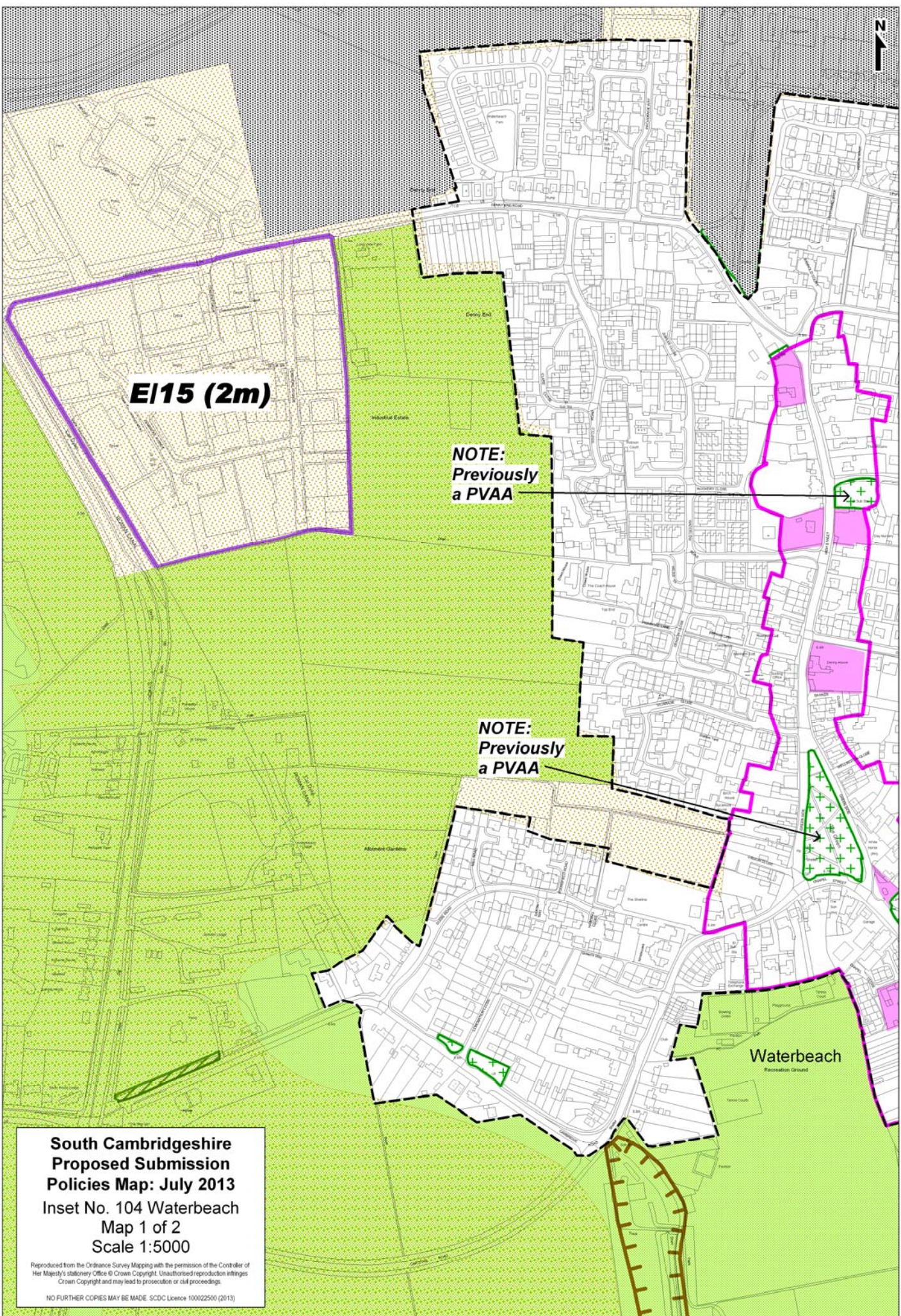


**South Cambridgeshire
Proposed Submission
Policies Map: July 2013**

Inset No. 103 Toft
Map 1 of 1
Scale 1:5000

Reproduced from the Ordnance Survey Mapping with the permission of the Controller of Her Majesty's Stationery Office © Crown Copyright. Unauthorised reproduction infringes Crown Copyright and may lead to prosecution or civil proceedings.

NO FURTHER COPIES MAY BE MADE. SCDC Licence 100022500 (2013)



EI15 (2m)

**NOTE:
Previously
a PVAA**

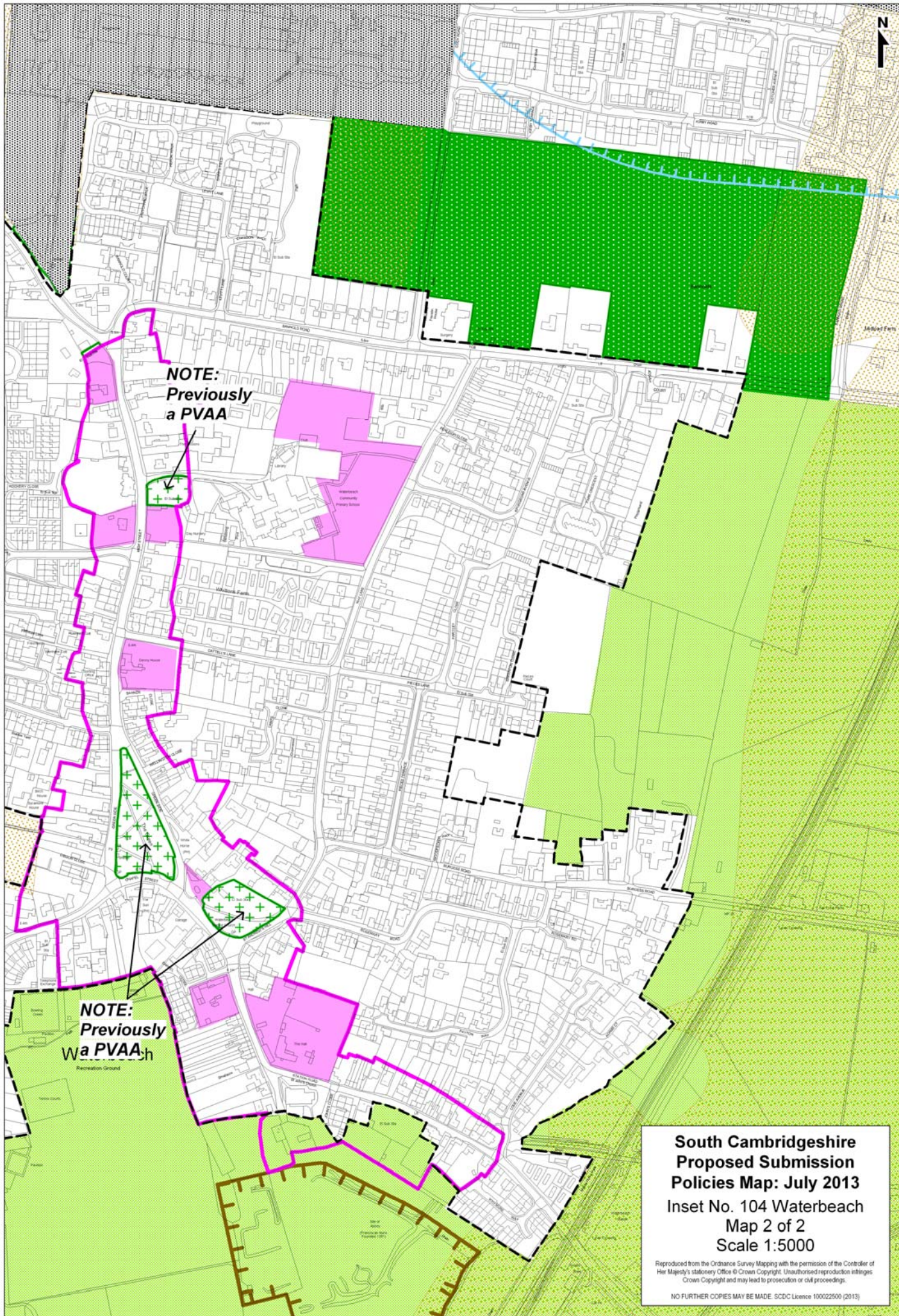
**NOTE:
Previously
a PVAA**

Waterbeach
Recreation Ground

**South Cambridgeshire
Proposed Submission
Policies Map: July 2013**
Inset No. 104 Waterbeach
Map 1 of 2
Scale 1:5000

Reproduced from the Ordnance Survey Mapping with the permission of the Controller of Her Majesty's Stationery Office © Crown Copyright. Unauthorised reproduction infringes Crown Copyright and may lead to prosecution or civil proceedings.

NO FURTHER COPIES MAY BE MADE. SCDC Licence 100022500 (2013)



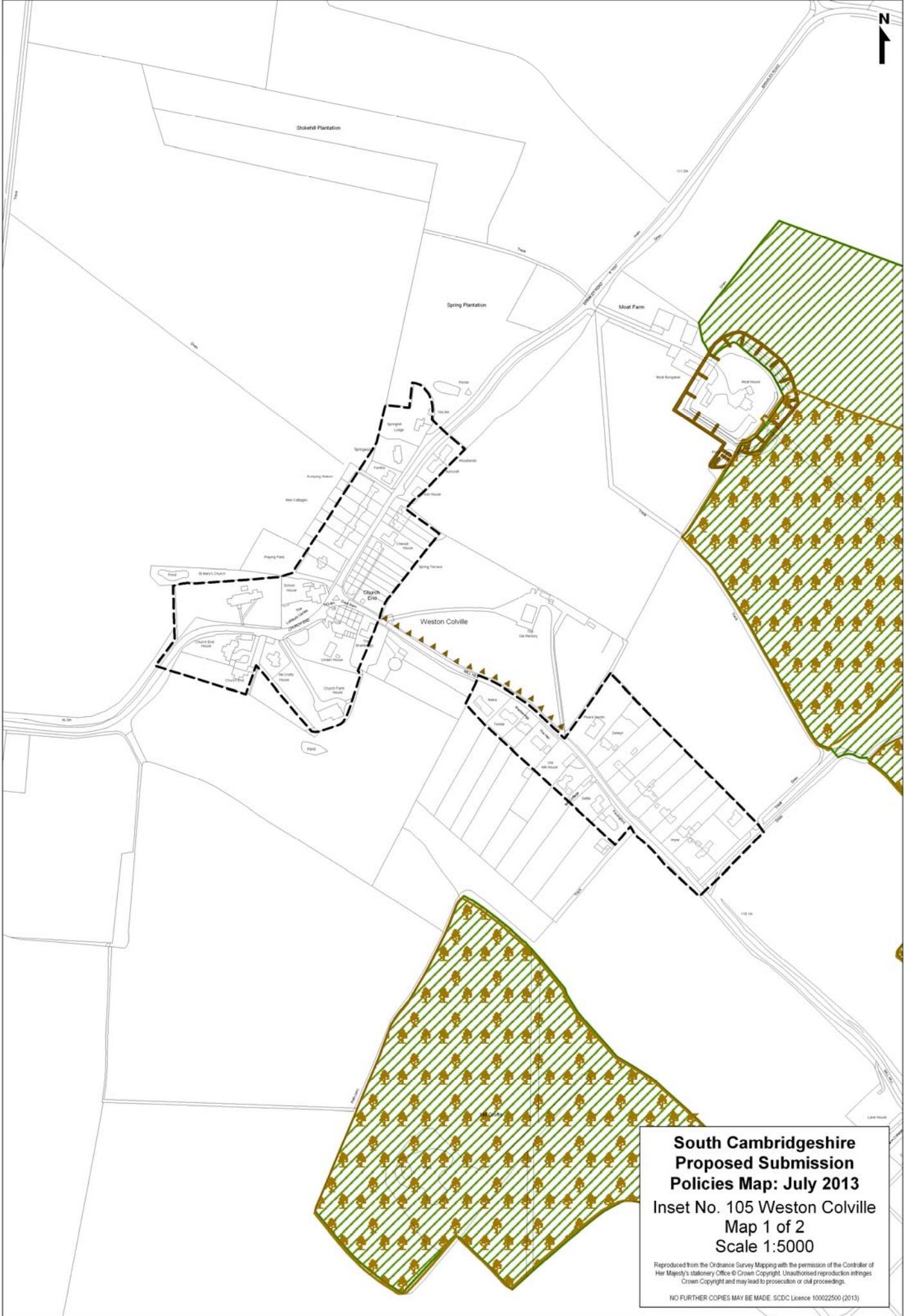
**NOTE:
Previously
a PVAA**

**NOTE:
Previously
Wa PVAA**
Recreation Ground

**South Cambridgeshire
Proposed Submission
Policies Map: July 2013**
Inset No. 104 Waterbeach
Map 2 of 2
Scale 1:5000

Reproduced from the Ordnance Survey Mapping with the permission of the Controller of Her Majesty's Stationery Office © Crown Copyright. Unauthorised reproduction infringes Crown Copyright and may lead to prosecution or civil proceedings.

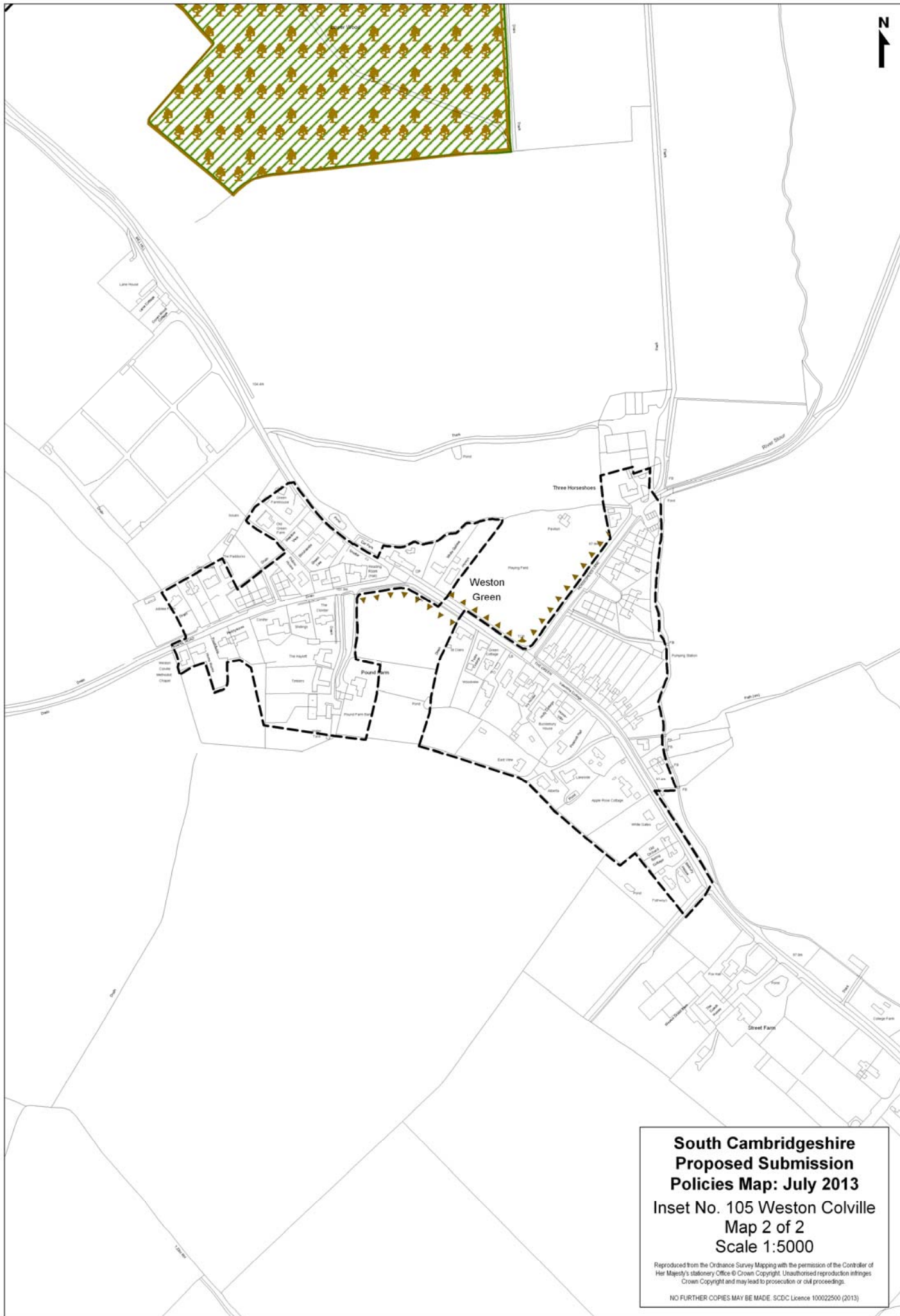
NO FURTHER COPIES MAY BE MADE. SCDL Licence 100022500 (2013)



**South Cambridgeshire
Proposed Submission
Policies Map: July 2013**
Inset No. 105 Weston Colville
Map 1 of 2
Scale 1:5000

Reproduced from the Ordnance Survey Mapping with the permission of the Controller of Her Majesty's Stationery Office © Crown Copyright. Unauthorised reproduction infringes Crown Copyright and may lead to prosecution or civil proceedings.

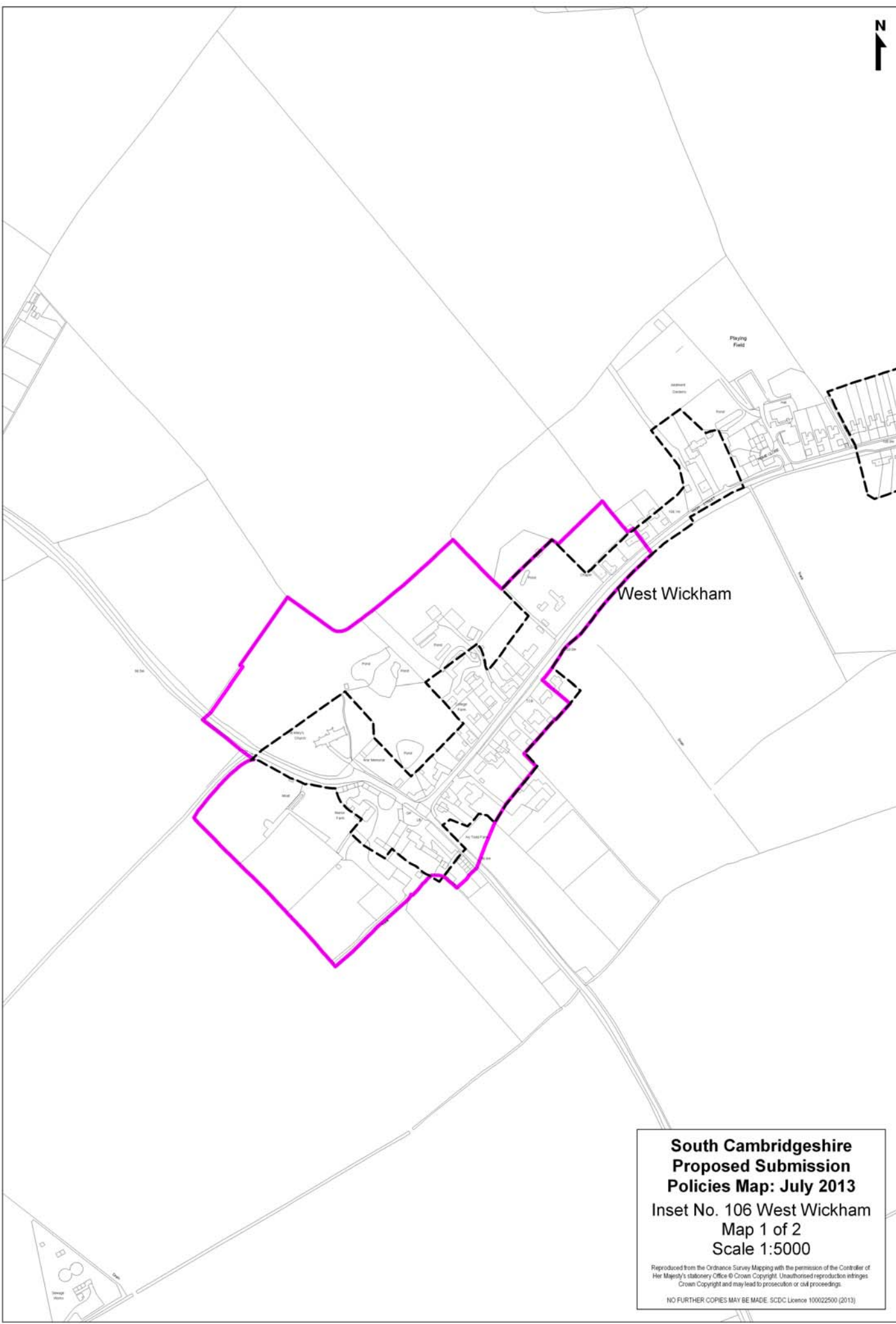
NO FURTHER COPIES MAY BE MADE. SCDC Licence 100022500 (2013)



**South Cambridgeshire
Proposed Submission
Policies Map: July 2013**
Inset No. 105 Weston Colville
Map 2 of 2
Scale 1:5000

Reproduced from the Ordnance Survey Mapping with the permission of the Controller of Her Majesty's Stationery Office © Crown Copyright. Unauthorised reproduction infringes Crown Copyright and may lead to prosecution or civil proceedings.

NO FURTHER COPIES MAY BE MADE. SCDC Licence 100022500 (2013)

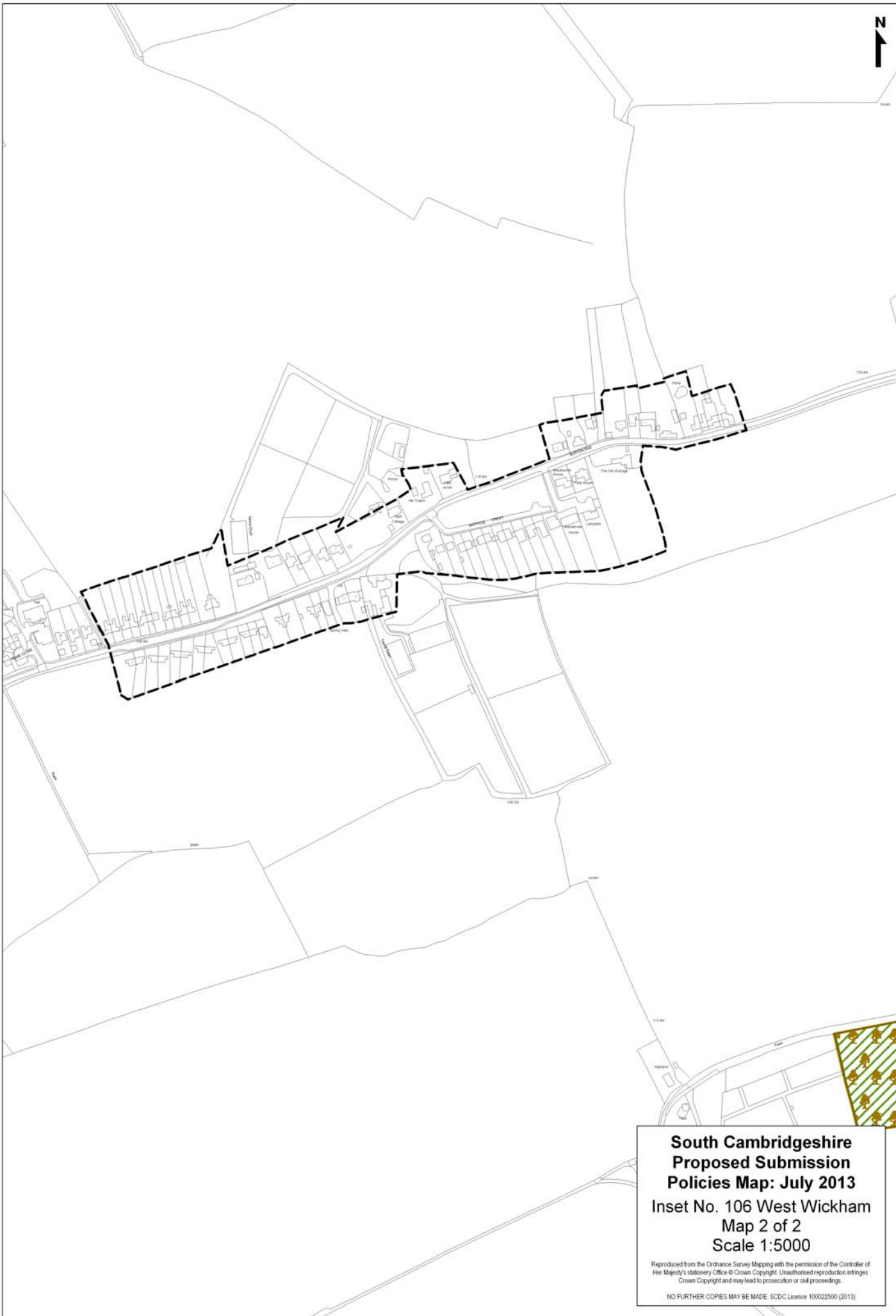


West Wickham

**South Cambridgeshire
Proposed Submission
Policies Map: July 2013**
Inset No. 106 West Wickham
Map 1 of 2
Scale 1:5000

Reproduced from the Ordnance Survey Mapping with the permission of the Controller of Her Majesty's Stationery Office © Crown Copyright. Unauthorised reproduction infringes Crown Copyright and may lead to prosecution or civil proceedings.

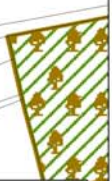
NO FURTHER COPIES MAY BE MADE. SCDC Licence 100022500 (2013)

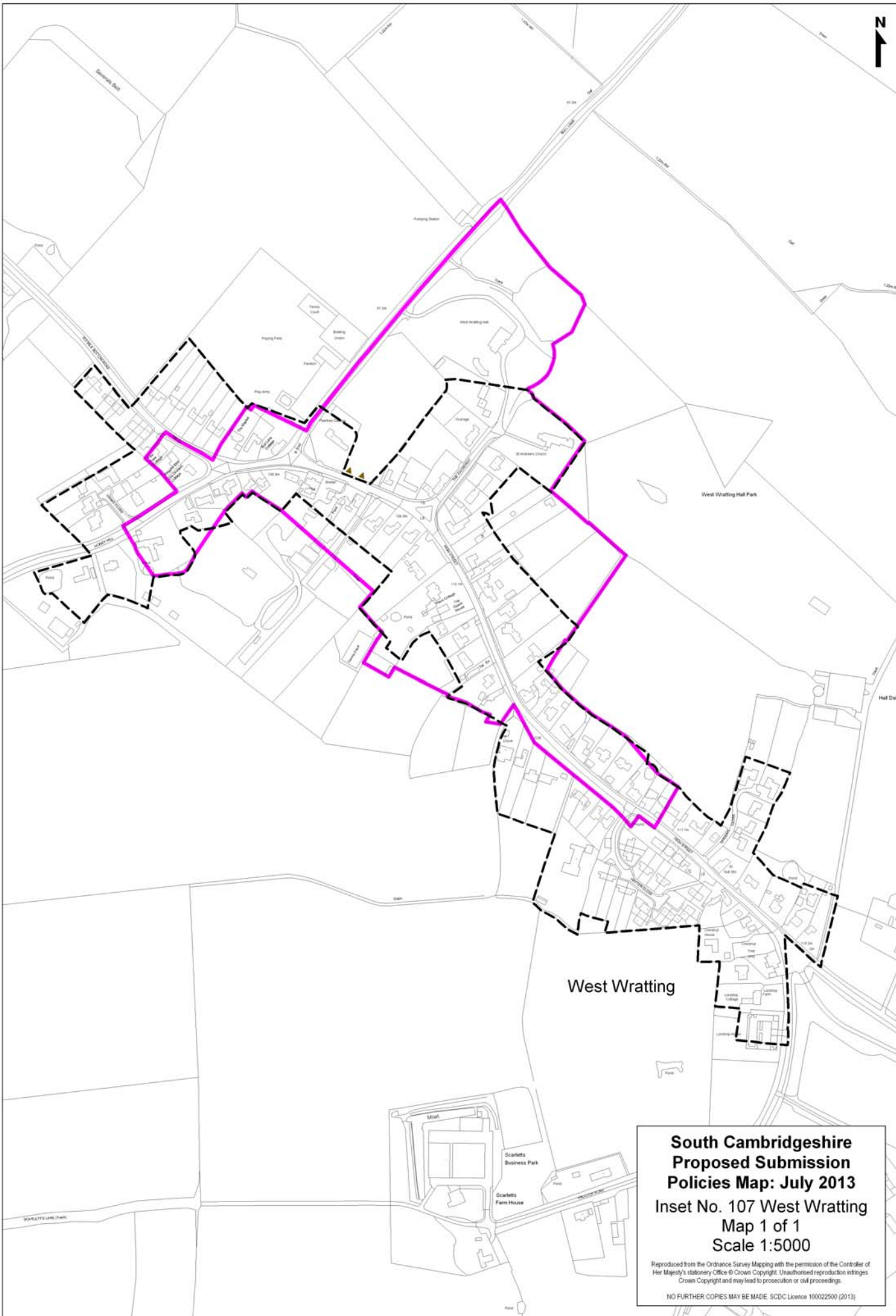


**South Cambridgeshire
Proposed Submission
Policies Map: July 2013**
Inset No. 106 West Wickham
Map 2 of 2
Scale 1:5000

Reproduced from the Ordnance Survey Mapping with the permission of the Controller of Her Majesty's Stationery Office © Crown Copyright. Unauthorised reproduction infringes Crown Copyright and may lead to prosecution or civil proceedings.

NO FURTHER COPIES MAY BE MADE. SDCDC Licence 100022500 (2013)





**South Cambridgeshire
Proposed Submission
Policies Map: July 2013**
Inset No. 107 West Wrating
Map 1 of 1
Scale 1:5000

Reproduced from the Ordnance Survey Mapping with the permission of the Controller of Her Majesty's Stationery Office © Crown Copyright. Unauthorised reproduction infringes Crown Copyright and may lead to prosecution or civil proceedings.

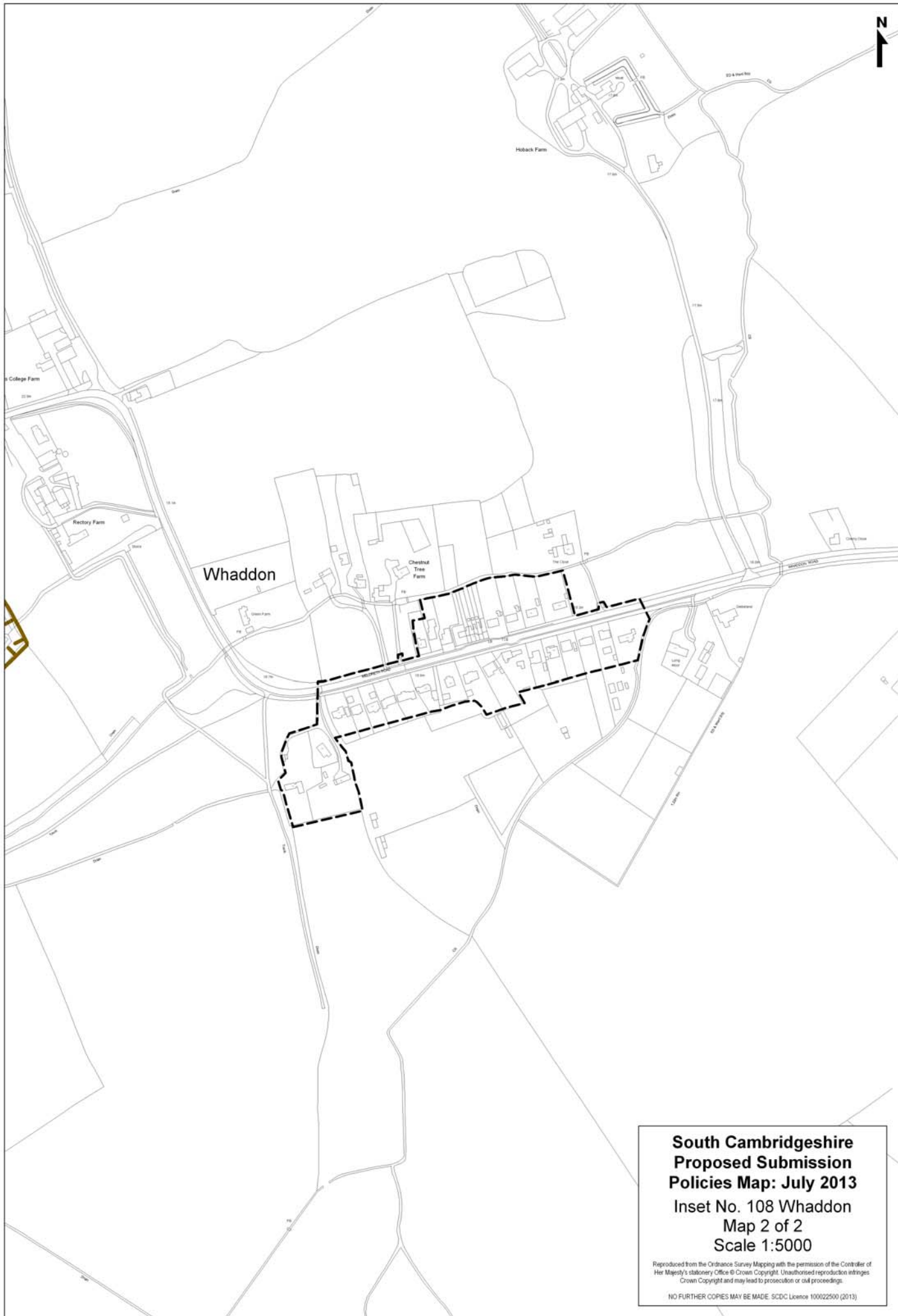
NO FURTHER COPIES MAY BE MADE. SCDC Licence 100022500 (2013)



**South Cambridgeshire
Proposed Submission
Policies Map: July 2013**
Inset No. 108 Whaddon
Map 1 of 2
Scale 1:5000

Reproduced from the Ordnance Survey Mapping with the permission of the Controller of Her Majesty's Stationery Office © Crown Copyright. Unauthorised reproduction infringes Crown Copyright and may lead to prosecution or civil proceedings.

NO FURTHER COPIES MAY BE MADE. SCDL Licence 100022500 (2013)



**South Cambridgeshire
Proposed Submission
Policies Map: July 2013**
Inset No. 108 Whaddon
Map 2 of 2
Scale 1:5000

Reproduced from the Ordnance Survey Mapping with the permission of the Controller of Her Majesty's Stationery Office © Crown Copyright. Unauthorised reproduction infringes Crown Copyright and may lead to prosecution or civil proceedings.

NO FURTHER COPIES MAY BE MADE. SDCDC Licence 100022500 (2013)